

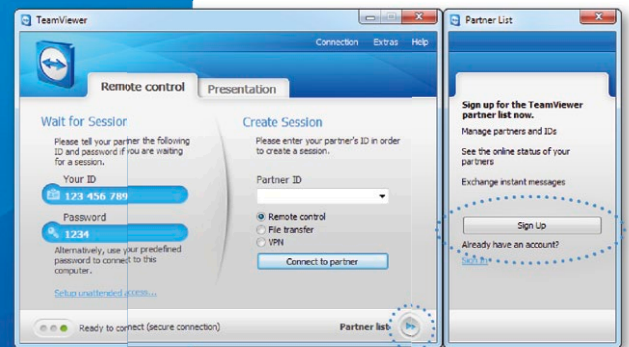


TeamViewer – Use the Partner List

Do you want to manage your partners in a simple way and quickly connect with ease? We'll show you how to effectively use the partner list in only three steps.

1 Sign up

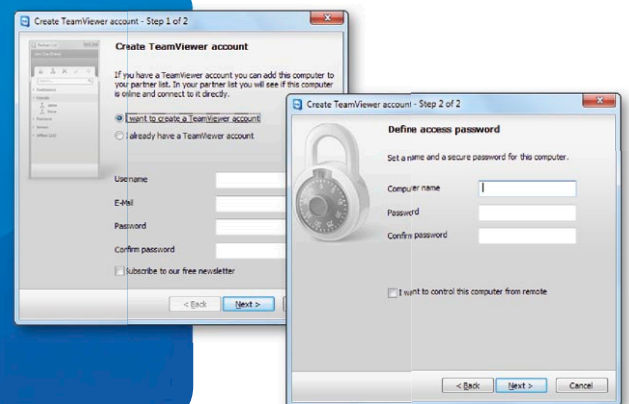
Start TeamViewer, full version. Click on the button in the lower right corner to open the partner list. To create a TeamViewer account click on "Sign Up". The account wizard will open automatically.



2 Create an account

In the first step enter an individual username, your e-mail address and a password.

In the second step you can add this computer directly to your new partner list.



3 Connect

Right-click on the desired partner and select one of the various connection options, such as remote control, presentation, file transfer or VPN.

