



TeamViewer – Setup Unattended Access

Would you like permanent access to a remote computer?
We'll show you how in three easy steps.

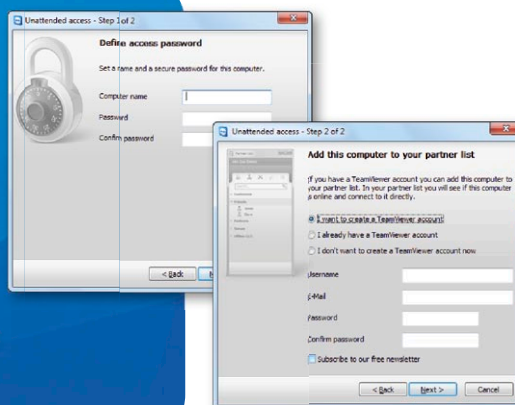
1 Installation (remote PC)

Install TeamViewer by following the instructions of the installation routine and launch TeamViewer. Click on the "Connection" tab at the top of the TeamViewer window and select "Setup unattended access ...".



2 Configuration (remote PC)

In the first step set a computer name and password for the remote computer. In the second step you can add this remote computer to your partner list (refer to "TeamViewer - Use the Partner List").



3 Connection

Open your partner list and right-click on the computer name you would like to connect with (see step 2). Choose the connection mode you prefer: remote control, presentation, file transfer or VPN.

