

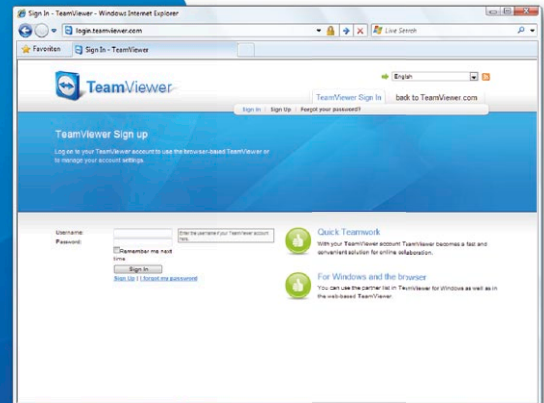
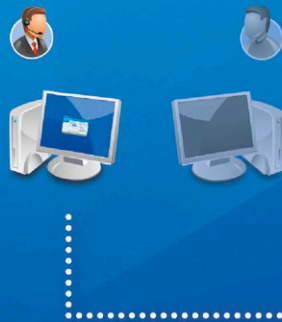


TeamViewer – Web Connector

You are on the road and would like to provide support from a public workstation? We'll show you how in three easy steps.

Your task

1 Create an account at <http://login.teamviewer.com> and log in. (If you have already registered for the partner list, simply use your login data.)



Your partner's task

2 Ask your partner to start the customer module, TeamViewer QuickSupport, and to provide you with his or her ID and password.



<http://www.teamviewer.com/download/TeamViewerQS.exe>

Connect

3 Add a new partner and connect by double-clicking. Then, simply enter the password in the appropriate field.

Your partners are automatically synchronized between the Web Connector and your partner list.

